



DECEMBER 2024

COMMUNITY BULLETIN



FIND OUT WHAT'S HAPPENING IN ROSSENDALE...

- Community Activities
- Community Information
- Health and Wellbeing
- Funding
- Training
- Volunteering

Welcome to your December Community Bulletin!

As we embrace the festive season, we're excited to bring you this month's bulletin in collaboration with our health and community partners. It's packed with updates on community activities, holiday events, health tips, grants, and training opportunities to keep you informed and engaged throughout December.

We hope you find it both useful and a little extra cheerful this holiday season!

All published Community Bulletins are available on our website - [Community Bulletins](#)

Feel free to share the bulletin with friends, community groups and on community group social media. If you have some information that you would like to share in the next bulletin, or you would like to be added to the e-mail distribution list, email us at

communitiesteam@rossendalebc.gov.uk



COMMUNITY ACTIVITIES

HORSE + BAMBOO BOO



Baked A La Ska

Quiz Night

A Monster Christmas
SEASONAL EVENT

Open Decks

Elf (PG)
CHRISTMAS FAMILY FILM

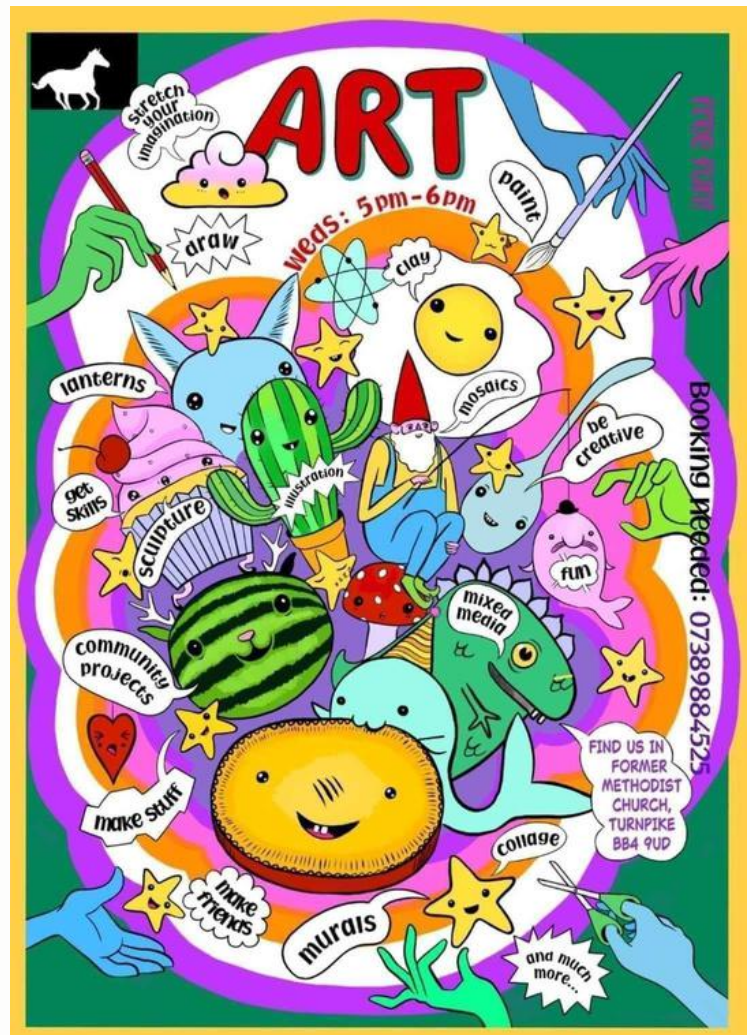
HORSE + BAMBOO WATERFOOT

Horse + Bamboo Theatre offers a wide range of events, including open mics, quiz nights, board game evenings, and seasonal festivities. Their diverse calendar features live music, interactive theater for families, film screenings, and holiday markets with festive flair. Check out their full event schedule [here](#).

ART WORKSHOP WHITE HORSE PROJECT NEWCHURCH

Wednesdays 5PM-6PM

The White Horse Project works with young people aged 11 to 18 in Rossendale, to improve their life chances and enable them to play a full part in their local community. They deliver an exciting programme of professional tuition, workshops, events and youth socials at Newchurch Community Space lead by local youth leaders who have grown up in the Rossendale Valley. Find out more <https://twhp.org>





TALL TALES FOR ALL MEN WHITWORTH

Free Event

Friday 13th December 10am-12:30pm

Enjoy Tony Curry's heartfelt stories and poems about life, love, and loss, followed by a workshop with Tony and Carl Bell on using creative arts to support men's mental health. Email

communitiesteam@rossendalebc.gov.uk
to book!

STUBBYLEE COMMUNITY GREENHOUSES BACUP

The Greenhouses team hopes everyone is staying warm as winter settles in! They are excited to announce the launch of their new website:

<https://www.thegreenhouses.org/>.

The website is now the main hub for booking activities, courses, tours, café visits, and learning more. Check it out today!



FAMILY NEW YEARS EVE PARTY! RAWTENSTALL

31/12/2024

12:30pm-14:30pm

Fun, Music, Food provided
Rawtenstall Family Hub and the Zone
The Old Fire Station
Burnley Road, Rawtenstall
BB4 8EW

[Book here](#)





**CANCER
RESEARCH
UK**

Together we are
beating cancer



Bacup Committee Invites you to the

Christmas Fayre

Saturday 7 December 10am-12pm

Bacup Methodist Church, Burnley Rd, OL13 8AB

Admission: £1 adults, 50p children, includes drink and mince pie

Expect entertainment, raffles, tombolas, food stalls and much more

Cancer Research UK is a registered charity in England and Wales (1089464), Scotland (SC041666), the Isle of Man (1103) and Jersey (247).
Registered address: 2 Redman Place, London, E20 1JQ.



Colouring Competition Instructions.

This competition is being held by Bacup Fundraising Committee in support for Cancer Research UK.

Christmas Fair on Saturday 7th December 10am to 12pm.

We ask children of all ages to colour the sheet in aid of Cancer Research UK for the competition. To enter, simply add your own design to this sheet and bring your amazing work to the committee's local Christmas Fair.

The event will be held at:

Rossendale Methodist Church at Bacup (Central) Burnley Road,
Bacup, Lancashire, OL13 8AB.

What3Words [///gifted.condense.pinch](https://www.what3words.com/what3words/gifted.condense.pinch)

Please bring your colouring with you and it will be judged on the day by members of the committee and the local Mayor. The judges will have their own criteria for judging the competition and their judgement is final. The winner will win a prize!

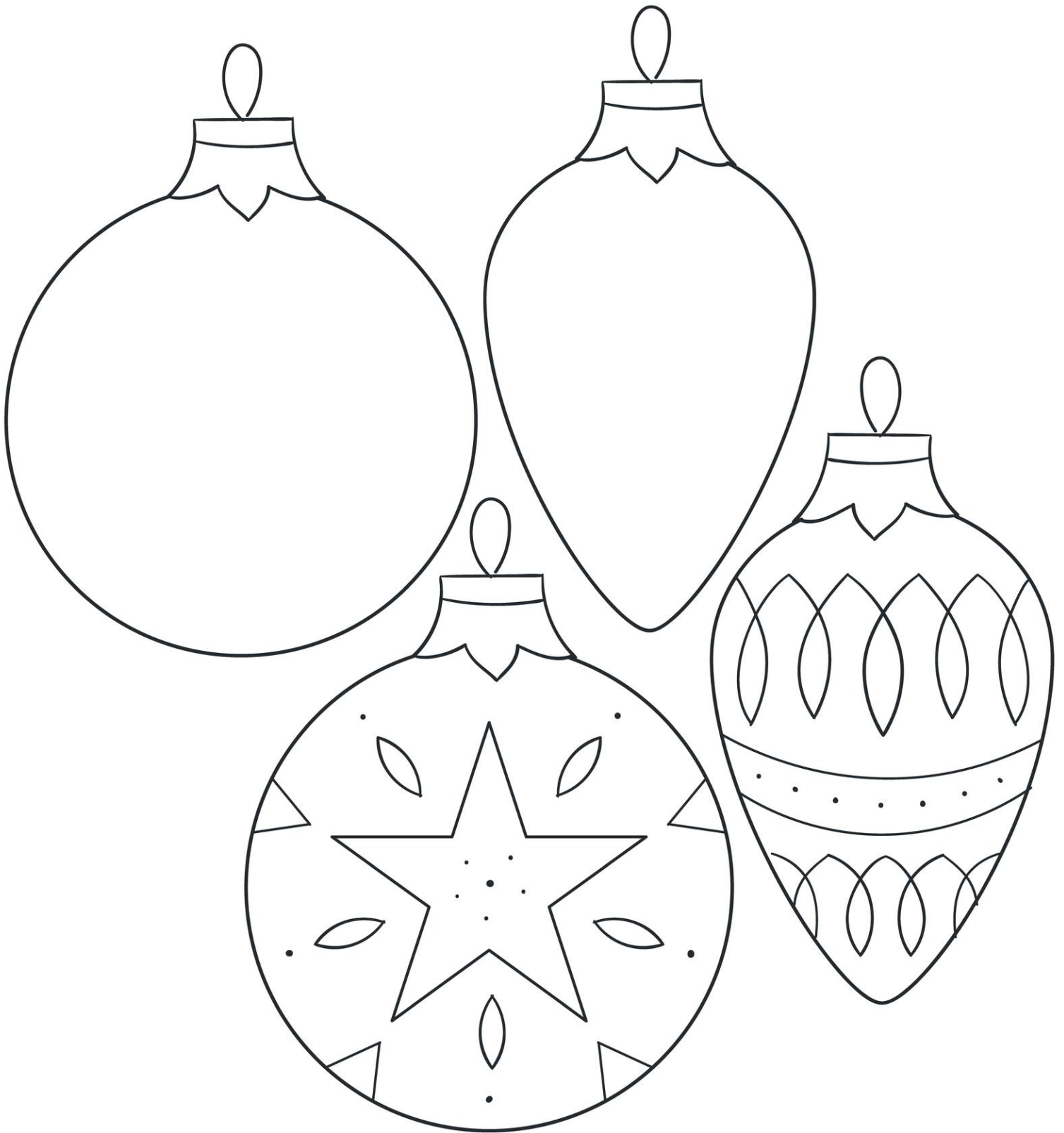
**Remember you can only enter if you attend the
Bacup Christmas Fair on 7th December.**

Please write your contact details below so we can contact you if you win.

Entrant's name: Age:

Parent/Care name:

Contact details:



Christmas Craft Extravaganza!

Saturday 7th December at The Ashcroft

10am until 12 noon

Choose from either

*making your own
Christmas crackers
ages 5+ £5*



*learning the Ukrainian
art of egg decorating
ages 12+ £10*



or

1pm until 4pm



*Our ever popular wreath
making workshop £20*

*Feel free to bring
additional decorations
to match your colour
scheme*

*Under 16s
must be
accompanied
by an adult*

*Bar open
selling
traditional
mulled wine*

*Scan the QR code or
book via the Whitworth
Town Council website*



SANTA EXPRESS



www.whitworth.gov.uk/events/santa_express

Come and meet Santa at one of our allocated stops and collect some sweets or wave to him from your window as he drives by!

Saturday 21st December

5.50pm	The Ashcroft	7.20pm	Station Rd Broadley
6.05pm	Whitworth M/C	7.25pm	The Birches
6.20pm	Lobden Golf Club	7.40pm	Masseycroft
6.35pm	Waingap View	7.45pm	Hallfold car park
6.40pm	Ainsdale Drive	7.55pm	Eastgate
6.50pm	Tonacliffe School	8.05pm	Spring Mill
6.55pm	Tonacliffe Way	8.15pm	Wallbank Drive
7.05pm	The Oxford	8.25pm	Wallbank Drive

Sunday 22nd December

6.00pm	Orama Ave	7.00pm	Spring Side
6.10pm	Orama Ave	7.10pm	Oak Street
6.15pm	Cowm Park Way S	7.20pm	Knowsley Crescent
6.20pm	The Hedgerows	7.30pm	St Vincent's, Britannia
6.25pm	Cockhall Lane	7.35pm	Britannia Post Office
6.35pm	Railway Close	7.45pm	St James Square
6.45pm	Halfway House	8.05pm	Facit Fold
6.55pm	Barley View	8.15pm	Longacres Drive

WHITWORTH
TOURISM & LEISURE COMMITTEE



Whitworth
Town Council

***** Timings are approximate and dates may change due to weather conditions. Please see Facebook for any updates *****

ROSSENDALE TOGETHER AND BCC
PRESENTS

FREE
EVENT

THE ELFABET ADVENTURE

JINGLE THE ELF HAS LOST HER LETTERS! JOIN THE
ADVENTURE, MEET JINGLE'S FESTIVE FRIENDS AND
HELP HER COMPLETE THE ELFABET!

Festive
Family Trail

Christmas
Characters

Prize for
Every Child

Activities &
Crafts

SATURDAY 21ST DECEMBER
11AM-2PM

STUBBYLEE PARK,
STUBBYLEE LN, BACUP OL13 9RQ



ARE YOU INTERESTED IN SETTING UP A WOMEN'S GROUP IN YOUR LOCAL AREA?

**EAST MEETS WEST IN LANCASTER
ARE LOOKING FOR PARTNERS WHO WANT TO SET UP
A GROUP ELSEWHERE IN THE COUNTY.**

THEY CAN PROVIDE:

- ADVICE AND SUPPORT FROM THEIR EXPERIENCE BUILDING A SUCCESSFUL MULTINATIONAL WOMEN'S GROUP
- TRAINING FOR VOLUNTEERS AND STAFF
- RESOURCES AND INSPIRATION FOR SESSION TOPICS
- ADVICE ON NAVIGATING FUNDING OPPORTUNITIES
- BEST-PRACTICE SHARING, INCLUDING INFORMATION ON THEIR SUCCESSFUL 'ACROSS THE GENERATIONS' SOCIAL INTEGRATION PROJECT
- A 6 MONTH PERIOD OF MENTORING AND SUPPORT

**EMAIL LRITCOMMUNITY@LANCASHIRE.GOV.UK
FOR MORE INFORMATION**



COMMUNITY INFORMATION



UK Government

Are you over State Pension age, or know someone who is?

Pension Credit tops up pension income and can help with day-to-day living costs.

If you are over State Pension age, you may be eligible to claim **Pension Credit**, even if you own your home or have savings. People who claim **Pension Credit** may also be able to get:

- The **Winter Fuel Payment*** and other help with heating costs
- Help with rent and Council Tax
- A free TV Licence for those aged 75 or over
- Help with the cost of NHS services, such as NHS dental treatment, glasses and transport costs for hospital appointments

You could be eligible for **Pension Credit** if your weekly income is below £218.15 or, if you have a partner who lives with you, £332.95. Qualifying income level may be higher in some circumstances.

Don't miss out.



SCAN TO FIND
OUT MORE



Check your eligibility at gov.uk/pension-credit
or by calling **0800 99 1234**

Eligibility criteria apply
*or the equivalent in Scotland.

GET READY FOR WINTER

LANCASHIRE COUNTY COUNCIL

Looking for tips and support to stay safe, warm, and well this winter? Visit the Lancashire County Council Winter Hub for essential advice on staying healthy, keeping your home warm, traveling safely, and accessing support for yourself or loved ones.

<https://www.lancashire.gov.uk/winter/>

Stay prepared. Stay informed. Stay safe!





THE BEACON SHED

ABOUT OUR SHED

The Beacon shed, is a purpose built dementia friendly community space which opened in 2023 and enables people living with dementia to take part in activities they enjoy. If you or someone you care for would like to know more about The Beacon Shed please see our website you can also contact us by email or telephone.

 www.beaconrossendale.org.uk

 shed@beaconrossendale.org.uk

 07726765368

East Lancashire Young People's Mental Health

**Concerned about your Mental Health?
Are you under 18 or concerned about
someone under 18?**

Advice sessions are available on-line via
'Attend Anywhere'
Delivered by ELCAS
tinyurl.com/ELCAS-LSCFT



Enter the word "ELCAS" as the first name and "drop in" as the second name followed by your date of birth.

You will then enter our virtual waiting area where we will collect you.

1st - 4th Wednesday of the month

2nd Wednesday of the month

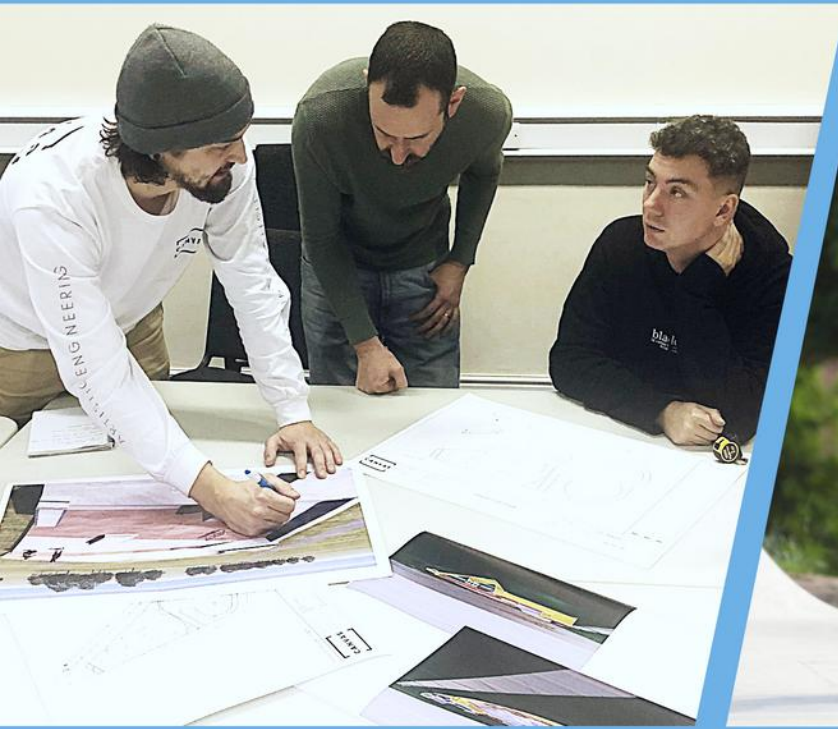
3rd Wednesday of the month

1pm – 3pm

3pm – 5pm

5pm – 7pm

Edgeside Park Skatepark



See below for the dates of each skatepark design workshop, organised by CANVAS in conjunction with Rossendale Borough Council. Meetings will take place either in-person at the Council Chamber, Futures Park, Bacup, OL13 0BB or online using Zoom.

If you want to be included in the skatepark working group, email 753-Rossendalebc@canvasspaces.co.uk. If you cannot attend the meeting, you can get involved via an online portal accessed via canvasspaces.co.uk.

Design Workshops

1st meeting
in-person

Tuesday 19th November, 6-8pm; Project introduction;
Working group and public consultation

2nd meeting
online via Zoom

Tuesday 3rd December, 6-8PM; Presentation of the amended
skatepark design; Listening to feedback from working group

3rd meeting
online via Zoom

Thursday 12th December, 6-8pm; Presentation of the 2nd
amended skatepark design; Working group sign-off

4th meeting
in-person


Thursday 19th December, 6-8pm; Presentation of signed-off
design to working group and public



BESIDE YOU IN BEREAVEMENT

**For anyone affected by suicide
Saturdays 12pm - 2/3pm
Starts January 11th**

Walking, talking, foraging, art



**Location: Pendle plant craft,
Lomeshayem marsh nature reserve
Kirby road, Nelson, BB9 6RS
Gill- 07493637684**

HEALTH AND WELLBEING

NEW MENTAL HEALTH & SUICIDE FIRST AID COURSES NOW AVAILABLE

Lancashire Mind has released new dates for their Mental Health First Aid (MHFA) and Suicide First Aid (SFA) courses—both are Orange Button approved! These free courses are open to anyone living or working in Lancashire and South Cumbria and can be attended in person or online.

What is the Orange Button Scheme?

The Orange Button Scheme helps identify people who have completed suicide prevention training and are:

- Comfortable discussing suicide.
- Able to listen without judgment.
- Ready to guide others to support services.

Started in 2020, the scheme aims to build a supportive community that challenges stigma around suicide. Orange Button holders are not counsellors but are trained to listen, provide information, and signpost to relevant services.

Upcoming Course Dates

For open-access course dates, visit [Lancashire Mind's website](#) or contact them for more details.

Contact

To learn more or arrange in-house training for your team, contact Alice Newton-Leeming:

 **07856 913301**

 **alicenewtonleeming@lancashiremind.org.uk**

TRAINING



Homemade Christmas

A fantastic FREE online event!

Wednesday 11th December
6:00pm - 7.30pm

Join us for an evening of crafting and festivities as you learn how to make edible treats, simple Christmas crafts and how to encourage wildlife to your garden over the winter months!

**FREE
Resource
Pack**
posted to you
in advance

Scan the QR
code
to enroll!

Open to anyone aged 19 and over living in Lancashire. The Zoom link will be emailed to you before the start of the event.

For more information visit
www.lal.ac.uk



FUNDING

°COSY HOMES
IN LANCASHIRE

Free Energy Grants from your Local Council

Free funding for Lancashire
homes that have NEVER had
a mains gas boiler and radiators

Call: 03306 061 488

www.chil.uk.com

DECEMBER 2024

THANKS FOR READING!



If you have any information you would like to include in the January community bulletin please email:

Communitiesteam@rossendalebc.gov.uk

By Friday 20th December 2024.

