



IMPACT IN BURNLEY

OCTOBER –
DECEMBER
2024



**BURNLEYPENDLE
& ROSSENDALE**
COUNCIL FOR VOLUNTARY SERVICE

Registered Charity Number: 1062446 Company Limited By Guarantee: 3328219

GROUP SUPPORT SUMMARY



FUNDING



Disclosure & Barring Service

£42,377.50
Awarded

£19,162
Awarded

Number of groups funded in Burnley

Number of groups funded in Burnley

10

4

Children & Young People Personal Health Budget

Adult Personal Health Budget

£0
Awarded

£930
Awarded

Number of families funded in Burnley

Number of individuals funded in Burnley

0

3

The BPRCVS Group Support Team provides support to VCFSE groups and organisations with policies and procedures, governance, best practice, funding and grant bids, DBS checks and much more.

22

Applications processed

7

Enquiries received

14

Support hours

214

Unique Groups Supported

115

Group Support Sessions e.g. Governance, Policies, Safeguarding, etc.

240

Funding Support Sessions

12

Payroll Support Sessions

2

New Start-ups Supported

73

Group Support Hours

206

Funding Support Hours

4

Unique Groups Accessing Payroll Support

10

Payroll Support Hours

EVENTS & COMMUNITY NETWORKS

COMMUNITY NETWORK



Burnley Linked

30

Number of
Attendees

9

New Groups
Registered

BPRCVS attends strategic and community networks regularly so that we can stay informed on future plans and developments, and in turn provide the relevant representation and support to communities and residents.

52

Community
Networks
Attended

4

Strategic
Networks
Attended

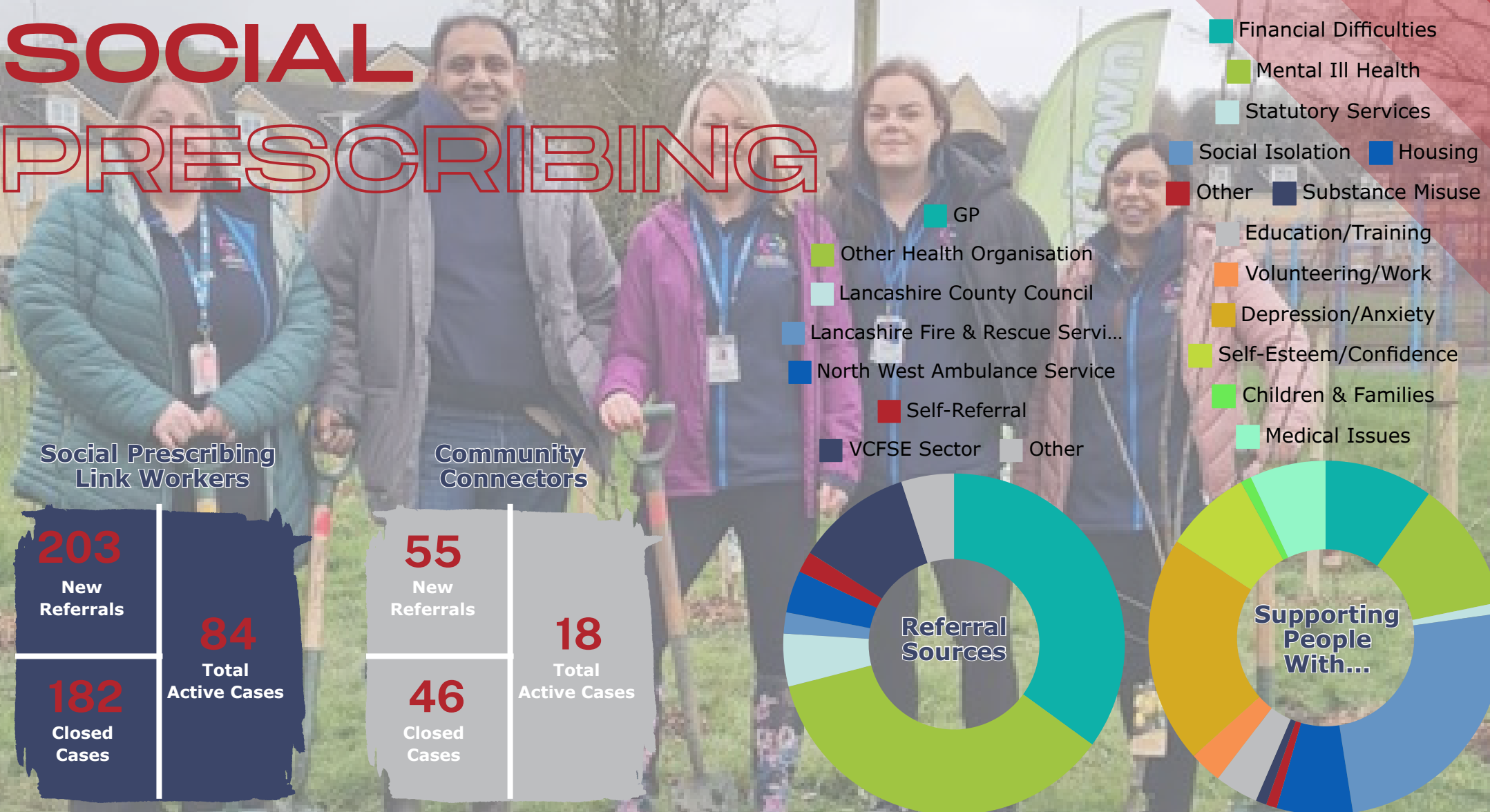
17

Partnership
Meetings
Attended

26

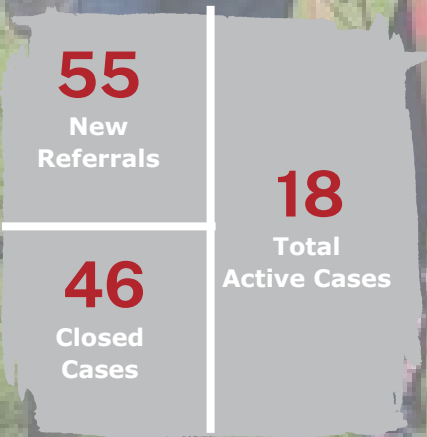
Events
Attended

SOCIAL PRESCRIBING

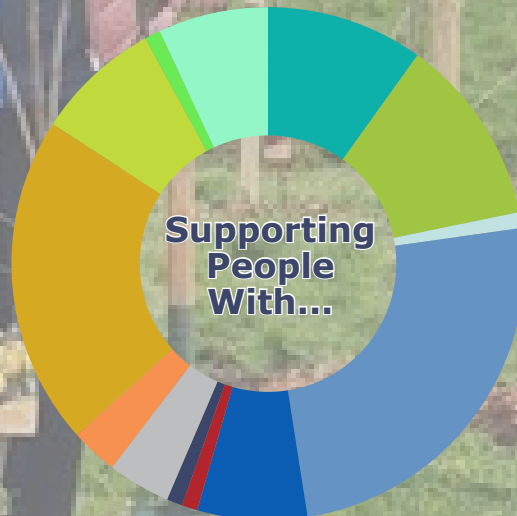
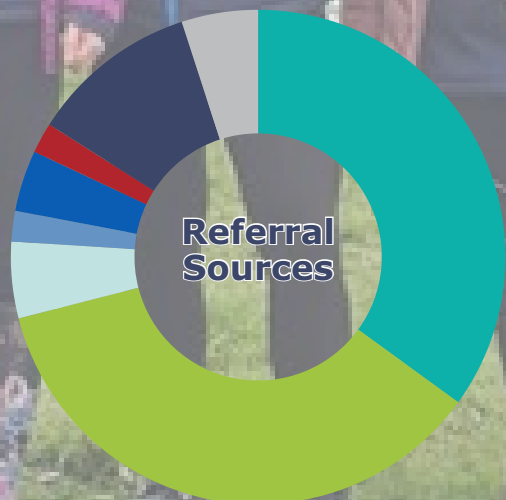


Social Prescribing
Link Workers

Community
Connectors



- GP
- Other Health Organisation
- Lancashire County Council
- Lancashire Fire & Rescue Servi...
- North West Ambulance Service
- Self-Referral
- VCFSE Sector
- Other
- Financial Difficulties
- Mental Ill Health
- Statutory Services
- Social Isolation
- Housing
- Other
- Substance Misuse
- Education/Training
- Volunteering/Work
- Depression/Anxiety
- Self-Esteem/Confidence
- Children & Families
- Medical Issues



Social Prescribing is a non-medical, community intervention that improves the health and wellbeing of local residents via the VCFSE sector. Link Workers assess and support clients with a large variety of needs from health to housing, and from debt to welfare, and many other needs too.



Funded by:
NHS
Lancashire and South Cumbria
Integrated Care Board

COMMUNITY TRANSPORT

COMMUNICARS & MINIBUS



111 Unique Passenger Bookings	12 Newly Registered Passengers	5 Registered Drivers	1 New Drivers
541 Total Passenger Journeys	1,430 Total Passenger Miles	272 Volunteer Driver Hours	£3,111.68 Volunteer Added Value



Communicars is a community transport service delivered by BPRCVS for people of Burnley, Pendle, and Rossendale. The service is reliant on volunteer drivers who use their own cars to transport passengers. The service helps the socially isolated, disabled and elderly get to groups, lunch clubs, trips into town, and much more.

The minibus is driven by volunteer drivers and is for hire by any of the small groups in Burnley, Pendle and Rossendale.

5 Unique Group Bookings	5 Total Journeys Taken	28 Volunteer Driver Hours	£320.32 Volunteer Added Value
280 Total Miles Travelled			

EMPLOYMENT SUPPORT

UKSPF PEOPLE & SKILLS



BPRCVS supports the people of Burnley to find employment or if the individual is lacking employment-related skills, we can support them with writing a CV, volunteering for work experience, or improving skills and knowledge through suitable training courses.

This project is for those who are classed as economically inactive.



Funded by
UK Government

VOLUNTEERING FOR WELLBEING & COMMUNITY HUB



The Volunteering for Wellbeing & Community Hub is a brand-new project funded by the National Lottery Community Fund which began in July 2023. BPRCVS is revitalising volunteering in Burnley, Pendle and Rossendale.

The Hub is the place to go for all things volunteering.



Funded by:



BUILDINGS

THE CVS CENTRE & GANNOW COMMUNITY CENTRE

446

Room
Booking
Sessions

12

Regular
Groups

4,959

Centre
Visitors

35

Number
of
Volunteers

2,159+

Volunteer
Hours

718

Community
Cafe
Visitors

715

Cafe
Meals
Served

73

Foodshare
Parcels
Issued

47

Families
Supported By
Foodshare

1,391+

Room
Booking
Hours

10

Resident
Groups

54

Visitors
Signposted

£24,701.82

Volunteer
Added
Value

66

Individuals
Supported By
Foodshare

94

Burnley
Together
Food Parcels

The CVS Centre is based in the heart of Burnley and is open to all VCFSE groups and organisations.

Gannow Community Centre is a thriving community centre serving the local people of Gannow as well as residents from all over the borough and beyond. With a wide range of groups delivering activities and sessions, there is always something for everyone happening at Gannow Community Centre.



01282 433740
 INFO@BPRCVS.CO.UK
 WWW.BPRCVS.CO.UK
 @BPRCVS

THE CVS CENTRE
 62-64 YORKSHIRE ST
 BURNLEY
 LANCASHIRE
 BB11 3BT



BURNLEYPENDLE & ROSSENDALE
COUNCIL FOR VOLUNTARY SERVICE
 Registered Charity Number: 1062446 Company Limited By Guarantee: 3328219