



# IMPACT IN BURNLEY

APRIL – JUNE  
2024



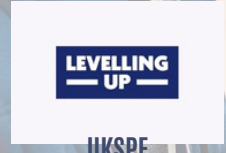
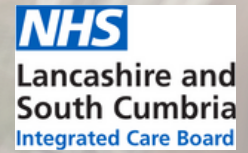
**BURNLEY PENDLE  
& ROSSENDALE**  
**COUNCIL FOR VOLUNTARY SERVICE**

Registered Charity Number: 1062446 Company Limited By Guarantee: 3328219

# GROUP SUPPORT SUMMARY



## FUNDING



Disclosure & Barring Service

£0  
Awarded

Number of groups funded in Burnley

0

Children & Young People Personal Health Budget

£0  
Awarded

Number of families funded in Burnley

0

£1,250  
Awarded

Number of groups funded in Burnley

2

Adult Personal Health Budget

£731  
Awarded

Number of individuals funded in Burnley

4

£126,847.77  
Awarded

Number of groups funded in Burnley

10

162  
Unique Groups Supported

38  
Enquiries received

21  
Applications processed

24  
Support hours

121  
Group Support Sessions e.g. Governance, Policies, Safeguarding, etc.

5  
New Start-ups Supported

95  
Group Support Hours

326  
Funding Support Sessions

340  
Funding Support Hours

8  
Unique Groups Accessing Payroll Support

18  
Payroll Support Sessions  
14  
Payroll Support Hours

The BPRCVS Group Support Team provides support to VCFSE groups and organisations with policies and procedures, governance, best practice, funding and grant bids, DBS checks and much more.

# EVENTS & COMMUNITY NETWORKS

## COMMUNITY NETWORK



Burnley Linked

**22**

Number of  
Attendees

**9**

New Groups  
Registered

**4**

Community  
Networks  
Attended

**1**

Strategic  
Networks  
Attended

**14**

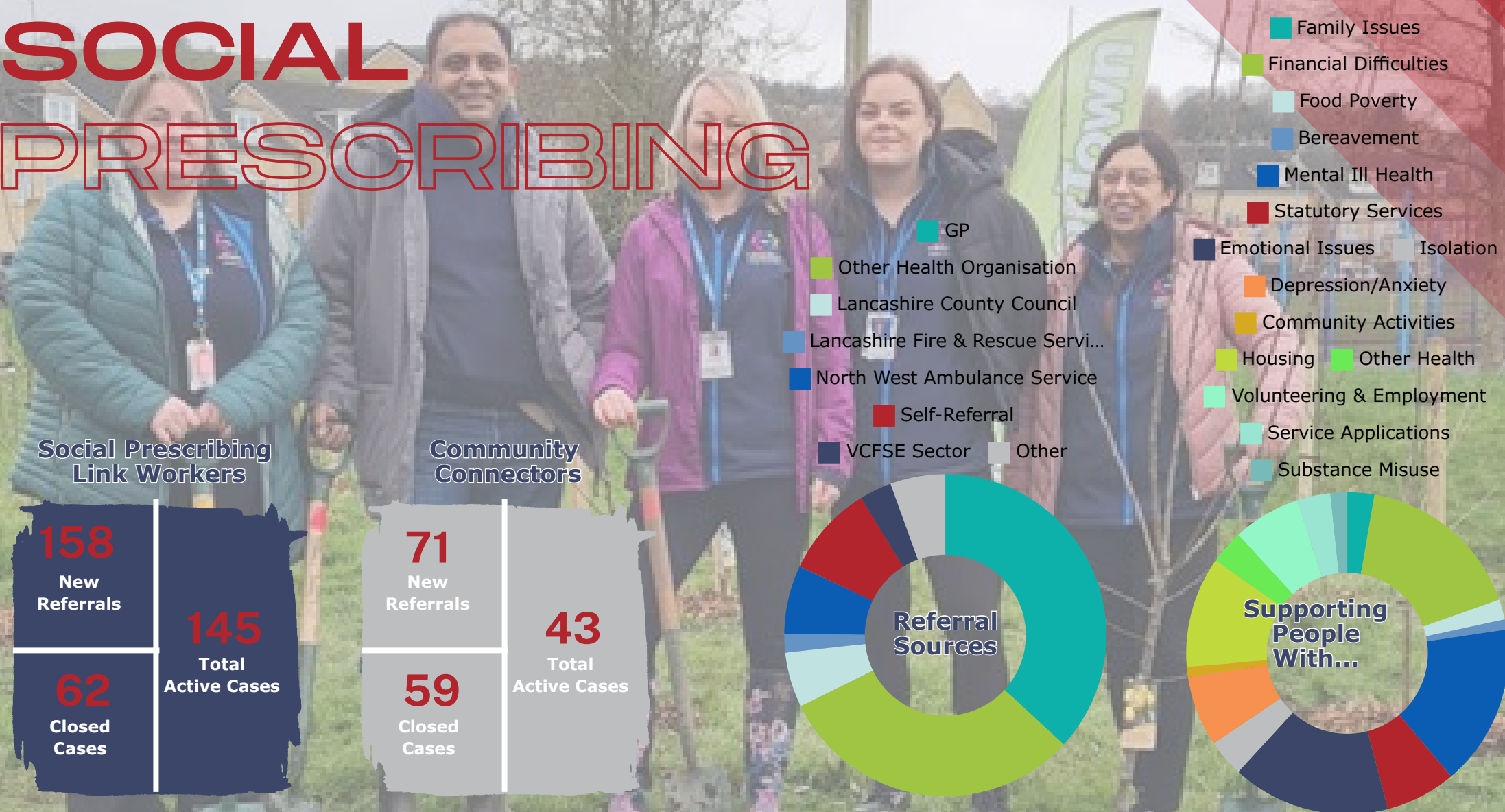
Partnership  
Meetings  
Attended

**30**

Events  
Attended

**BPRCVS attends strategic and community networks regularly so that we can stay informed on future plans and developments, and in turn provide the relevant representation and support to communities and residents.**

# SOCIAL PRESCRIBING



Social Prescribing is a non-medical, community intervention that improves the health and wellbeing of local residents via the VCFSE sector. Link Workers assess and support clients with a large variety of needs from health to housing, and from debt to welfare, and many other needs too.



**Funded by:**  
**NHS**  
Lancashire and  
South Cumbria  
Integrated Care Board

# COMMUNITY TRANSPORT

## COMMUNICARS & MINIBUS



<b>123</b> Unique Passenger Bookings	<b>9</b> Newly Registered Passengers	<b>7</b> Registered Drivers	<b>0</b> New Drivers
<b>674</b> Total Passenger Journeys	<b>1,947</b> Total Passenger Miles	<b>338</b> Volunteer Driver Hours	<b>£3,886.72</b> Volunteer Added Value



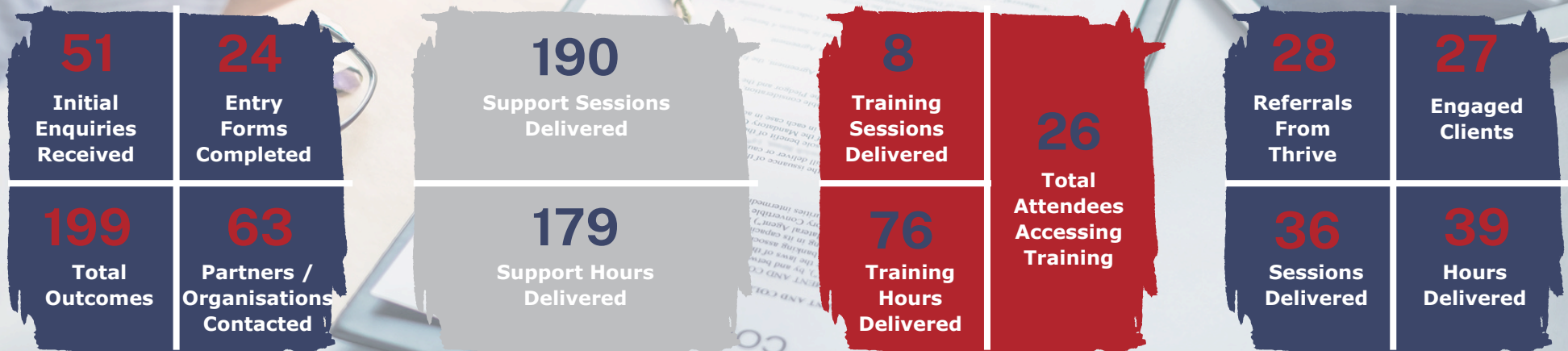
Communicars is a community transport service delivered by BPRCVS for people of Burnley, Pendle, and Rossendale. The service is reliant on volunteer drivers who use their own cars to transport passengers. The service helps the socially isolated, disabled and elderly get to groups, lunch clubs, trips into town, and much more.

The minibus is driven by volunteer drivers and is for hire by any of the small groups in Burnley, Pendle and Rossendale.

<b>3</b> Unique Group Bookings	<b>3</b> Total Journeys Taken	<b>1</b> Volunteer Driver Hours	<b>£160.16</b> Volunteer Added Value
<b>125</b> Total Miles Travelled			

# EMPLOYMENT SUPPORT

## UKSPF PEOPLE & SKILLS



BPRCVS supports the people of Burnley to find employment or if the individual is lacking employment-related skills, we can support them with writing a CV, volunteering for work experience, or improving skills and knowledge through suitable training courses.

This project is for those who are classed as economically inactive.



Funded by  
UK Government

# VOLUNTEERING FOR WELLBEING & COMMUNITY HUB

## Volunteer Hours

120

Decorating

421

Reception/Admin

274

Community Garden

516

Community Cafe

86

Foodshare

30

Front of House

18

Admin (Gannow)

1,465

Total Hours

£16,759.60

Added Value

7

Organisations Registered For Brokerage

3

Brokerage Roles Filled With Volunteers

50

Volunteer Enquiries

22

Volunteers Recruited

24

Total Volunteers Recruited Into CVS Projects

The Volunteering for Wellbeing & Community Hub is a brand-new project funded by the National Lottery Community Fund which began in July 2023. BPRCVS is revitalising volunteering in Burnley, Pendle and Rossendale.

The Hub is the place to go for all things volunteering.



Funded by:



# CHILDREN & FAMILIES

## HEALTH & WELLBEING

Our aim is to empower children and young people, build their confidence, help them to learn new and different skills, promote physical and mental wellbeing, and enable the making of new friends all while having fun.

14

New Referrals

7

Closed Cases

25

Total Active Cases (inc. those for whom support has concluded, but remain registered to access CVS activities)

Funded by:





# BUILDINGS

# THE CVS CENTRE & GANNOW COMMUNITY CENTRE

**555**

Room  
Booking  
Sessions

**15**

Regular  
Groups

**1,529**

Centre  
Visitors

**46**

Number  
of  
Volunteers

**1,521**

Volunteer  
Hours

**1,228**

Community  
Cafe  
Visitors

**1,225**

Cafe  
Meals  
Served

**89**

Foodshare  
Parcels  
Issued

**51**

Families  
Supported By  
Foodshare

**1,717**

Room  
Booking  
Hours

**4**

Resident  
Groups

**36**

Visitors  
Signposted

**£17,400.24**

Volunteer  
Added  
Value

**38**

Individuals  
Supported By  
Foodshare

**88**

Burnley  
Together  
Food Parcels

The CVS Centre is based in the heart of Burnley and is open to all VCFSE groups and organisations.

Gannow Community Centre is a thriving community centre serving the local people of Gannow as well as residents from all over the borough and beyond. With a wide range of groups delivering activities and sessions, there is always something for everyone happening at Gannow Community Centre.



01282 433740  
 INFO@BPRCVS.CO.UK  
 WWW.BPRCVS.CO.UK  
 @BPRCVS

THE CVS CENTRE  
 62-64 YORKSHIRE ST  
 BURNLEY  
 LANCASHIRE  
 BB11 3BT



**BURNLEYPENDLE  
 & ROSSENDALE**  
**COUNCIL FOR VOLUNTARY SERVICE**  
 Registered Charity Number: 1062446 Company Limited By Guarantee: 3328219