



IMPACT IN BURNLEY

JULY –
SEPTEMBER
2024



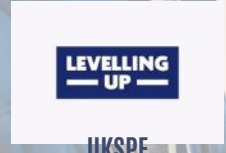
**BURNLEY PENDLE
& ROSSENDALE**
COUNCIL FOR VOLUNTARY SERVICE

Registered Charity Number: 1062446 Company Limited By Guarantee: 3328219

GROUP SUPPORT SUMMARY



FUNDING



Disclosure & Barring Service

£19,886 £2,500 £358,510.81

Awarded
Number of groups funded in Burnley
4
Children & Young People Personal Health Budget

Awarded
Number of groups funded in Burnley
3
Adult Personal Health Budget

Awarded
Number of groups funded in Burnley
21

£0
Awarded
Number of families funded in Burnley
0

£1,740.76
Awarded
Number of individuals funded in Burnley
4

46
Enquiries received

11
Applications processed

18+
Support hours

287
Unique Groups Supported

114
Group Support Sessions e.g. Governance, Policies, Safeguarding, etc.

384
Funding Support Sessions

4
Unique Groups Accessing Payroll Support

15
Payroll Support Sessions

4
New Start-ups Supported

151+
Group Support Hours

160
Funding Support Hours

10+
Payroll Support Hours

The BPRCVS Group Support Team provides support to VCFSE groups and organisations with policies and procedures, governance, best practice, funding and grant bids, DBS checks and much more.

EVENTS & COMMUNITY NETWORKS

COMMUNITY NETWORK



Burnley Linked

43

Number of
Attendees

16

New Groups
Registered

BPRCVS attends strategic and community networks regularly so that we can stay informed on future plans and developments, and in turn provide the relevant representation and support to communities and residents.

25

Community
Networks
Attended

0

Strategic
Networks
Attended

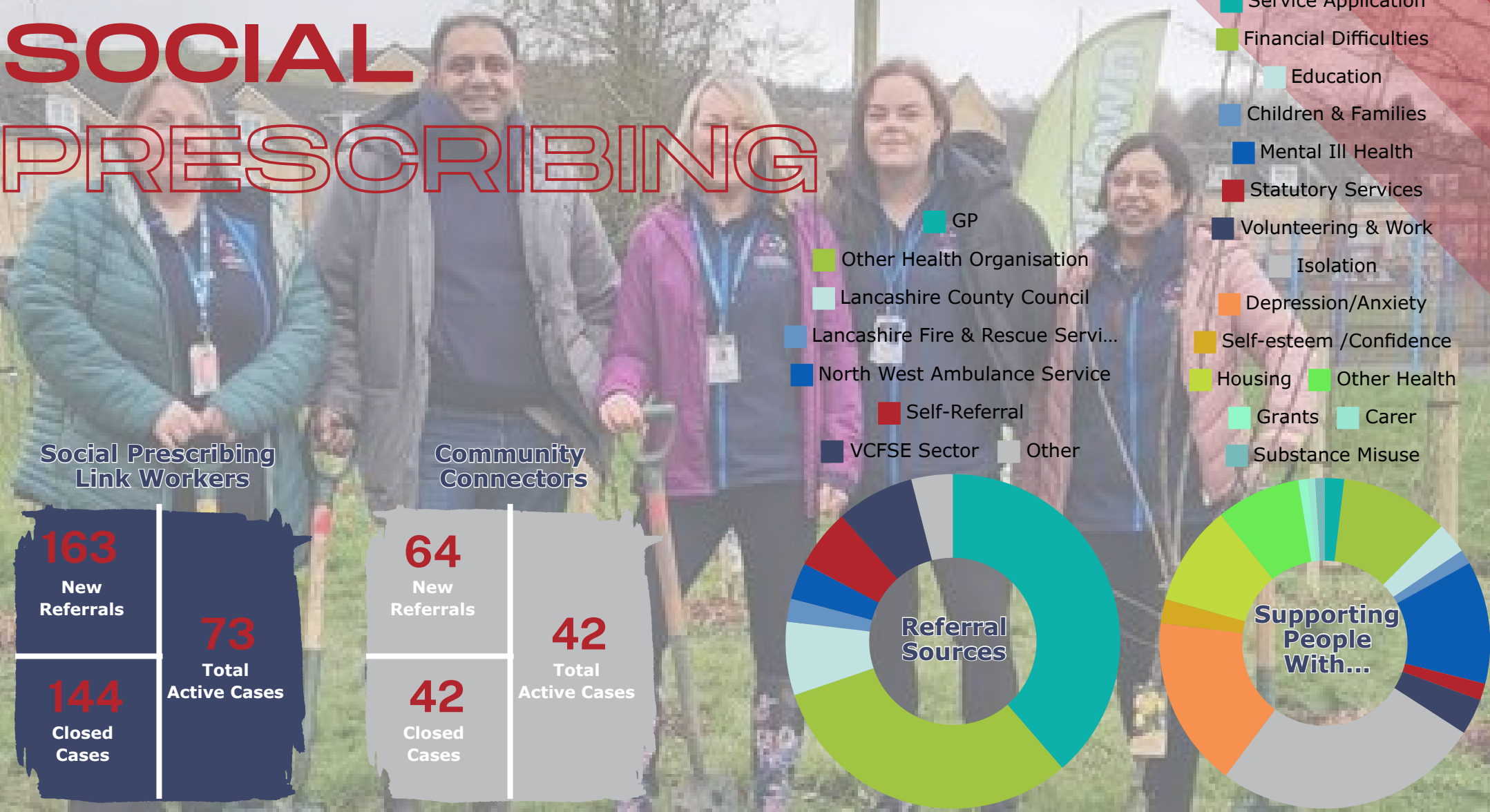
28

Partnership
Meetings
Attended

32

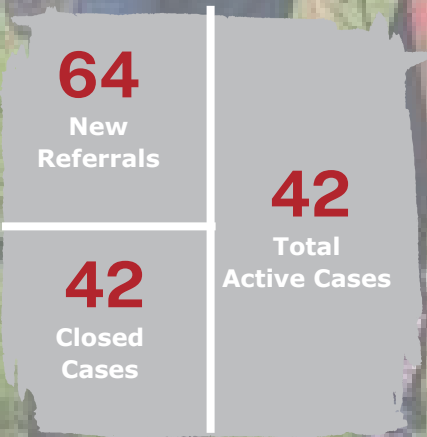
Events
Attended

SOCIAL PRESCRIBING

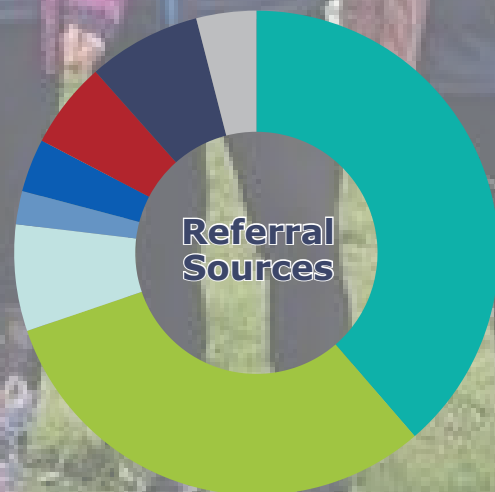


Social Prescribing
Link Workers

Community
Connectors



- GP
- Other Health Organisation
- Lancashire County Council
- Lancashire Fire & Rescue Servi...
- North West Ambulance Service
- Self-Referral
- VCFSE Sector
- Other
- Service Application
- Financial Difficulties
- Education
- Children & Families
- Mental Ill Health
- Statutory Services
- Volunteering & Work
- Isolation
- Depression/Anxiety
- Self-esteem /Confidence
- Housing
- Other Health
- Grants
- Carer
- Substance Misuse



Social Prescribing is a non-medical, community intervention that improves the health and wellbeing of local residents via the VCFSE sector. Link Workers assess and support clients with a large variety of needs from health to housing, and from debt to welfare, and many other needs too.



Funded by:
NHS
 Lancashire and South Cumbria Integrated Care Board

COMMUNITY TRANSPORT

COMMUNICARS & MINIBUS



126 Unique Passenger Bookings	11 Newly Registered Passengers	7 Registered Drivers	2 New Drivers
675 Total Passenger Journeys	1,972 Total Passenger Miles	338 Volunteer Driver Hours	£3,866.72 Volunteer Added Value



Communicars is a community transport service delivered by BPRCVS for people of Burnley, Pendle, and Rossendale. The service is reliant on volunteer drivers who use their own cars to transport passengers. The service helps the socially isolated, disabled and elderly get to groups, lunch clubs, trips into town, and much more.

The minibus is driven by volunteer drivers and is for hire by any of the small groups in Burnley, Pendle and Rossendale.

7 Unique Group Bookings	10 Total Journeys Taken	65.5 Volunteer Driver Hours	£749.32 Volunteer Added Value
529 Total Miles Travelled			

EMPLOYMENT SUPPORT

UKSPF PEOPLE & SKILLS



BPRCVS supports the people of Burnley to find employment or if the individual is lacking employment-related skills, we can support them with writing a CV, volunteering for work experience, or improving skills and knowledge through suitable training courses.

This project is for those who are classed as economically inactive.



Funded by
UK Government

VOLUNTEERING FOR WELLBEING & COMMUNITY HUB



The Volunteering for Wellbeing & Community Hub is a brand-new project funded by the National Lottery Community Fund which began in July 2023. BPRCVS is revitalising volunteering in Burnley, Pendle and Rossendale.

The Hub is the place to go for all things volunteering.



Funded by:



CHILDREN & FAMILIES

HEALTH & WELLBEING

Our aim is to empower children and young people, build their confidence, help them to learn new and different skills, promote physical and mental wellbeing, and enable the making of new friends all while having fun.

5

New Referrals

9

Closed Cases

11*

Total Active Cases (*Paused until April 2025 when funding will be reviewed to restart the project)

Funded by:



BUILDINGS

THE CVS CENTRE & GANNOW COMMUNITY CENTRE

412

Room
Booking
Sessions

13

Regular
Groups

3,092

Centre
Visitors

44

Number
of
Volunteers

1,502+

Volunteer
Hours

28

Foodshare
Parcels
Issued

62

Families
Supported By
Foodshare

1,298+

Room
Booking
Hours

9

Resident
Groups

127

Visitors
Signposted

£17,185.74

Volunteer
Added
Value

542

Community
Cafe
Visitors

511

Cafe
Meals
Served

50

Individuals
Supported By
Foodshare

60

Burnley
Together
Food Parcels

The CVS Centre is based in the heart of Burnley and is open to all VCFSE groups and organisations.

Gannow Community Centre is a thriving community centre serving the local people of Gannow as well as residents from all over the borough and beyond. With a wide range of groups delivering activities and sessions, there is always something for everyone happening at Gannow Community Centre.



01282 433740
 INFO@BPRCVS.CO.UK
 WWW.BPRCVS.CO.UK
 @BPRCVS

THE CVS CENTRE
 62-64 YORKSHIRE ST
 BURNLEY
 LANCASHIRE
 BB11 3BT



BURNLEY PENDLE & ROSSENDALE
COUNCIL FOR VOLUNTARY SERVICE
 Registered Charity Number: 1062446 Company Limited By Guarantee: 3328219